

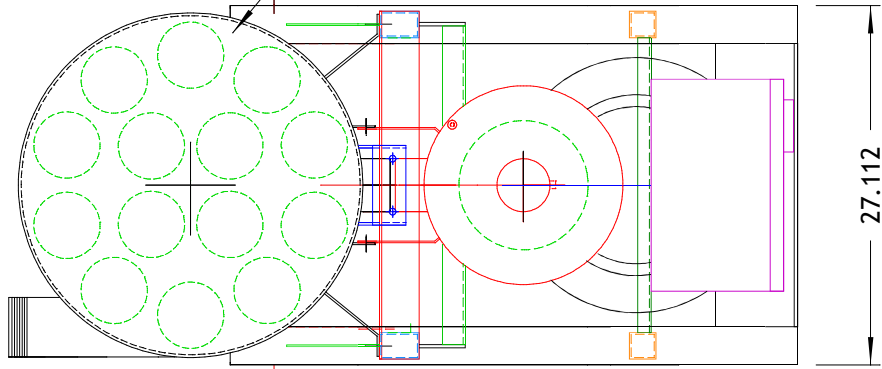
# MODEL DVR2054c

## 20.0 HP VACUUM SYSTEM

FOURTEEN (14) FILTER BAGS WITH  
61.6 SQ FT FILTER AREA

LARGE, EASY ACCESS  
FILTER SERVICE DOOR

SUPER EFFICIENT  
FILTRATION



### SPECIFICATIONS:

780 SCFM MAX (50Hz)  
90" WG MAX VACUUM  
99.9% @ 0.5 MICRON EFFICIENT  
85 dBa NOISE LEVEL  
WEIGHT 644 LBS

26" DIAMETER  
BAGHOUSE FILTER

INLINE FILTER  
WITH D.P. GAUGE

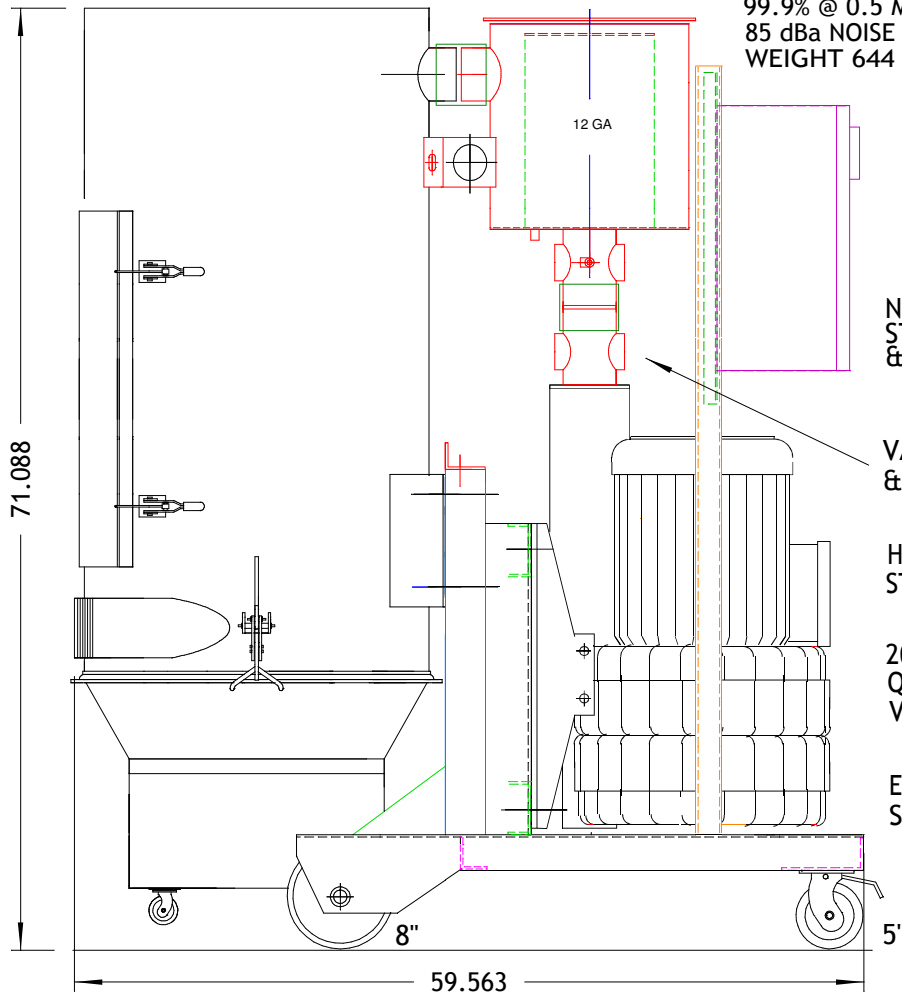
EFFECTIVE  
FILTER BAG  
SHAKER

FILTERS NEVER  
NEED CLEANING  
AS THE CANISTER  
FILLS.

99.9% INLINE  
FILTER WITH  
CONDITION  
INDICATOR

4" NPT  
INLET WITH  
INTERNAL  
WEAR STRIP

27.0 US GAL  
STORAGE DRUM



NEMA 4  
STARTER PANEL  
& DP GAUGE

VACUUM GAUGE  
& RELIEF VALVES

HEAVY DUTY ALL  
STEEL FRAME

20.0 HP  
QUIET, DEPENDABLE  
VACUUM PRODUCER

EFFECTIVE, BUILT-IN  
SILENCER

			DATE:	OCT 2005	DUROVAC INDUSTRIAL VACUUMS BRAMPTON, ONT 888-330-3365
			DRAWN BY:	KRW	
01			SCALE:	N.T.S.	<b>DuroVac</b> <b>DVR2054c</b> CONTINUOUS DUTY VACUUM SYSTEM
00	23 MAR 09	ISSUED FOR REVIEW	DRAWING No.	Rev.	
No.	DATE	REVISIONS	090323 DO1	00	